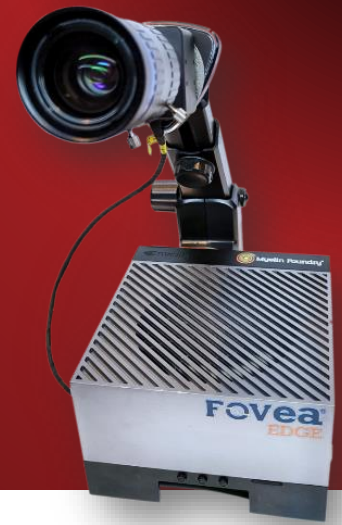


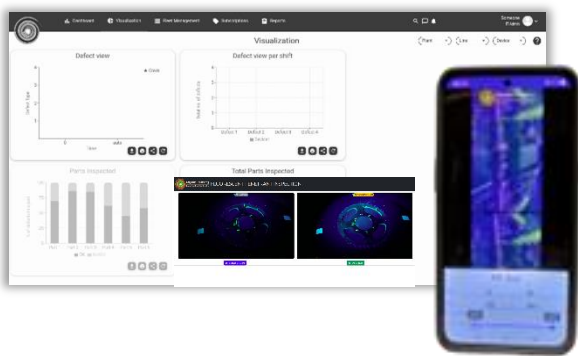
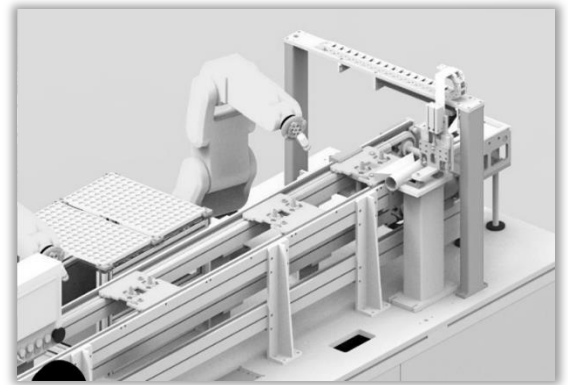
FOVEA EDGE COMPUTER VISION

Turnkey Installations & Handheld Solutions



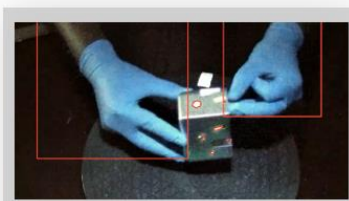
Fovea EDGE Computer Vision+

Computer vision product using deep learning for high complexity surfaces. Applications in AI based dent, chip, holes, scratches, cracks, finish, paint, wear, joints, welds, moulds, probe marks and other custom defect detection. Automate end-end visual inspection jobs for high availability manufacturing lines.

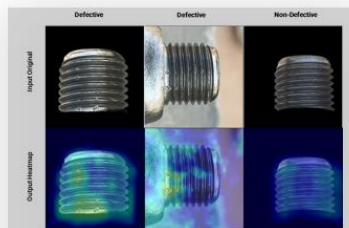


HAND-i

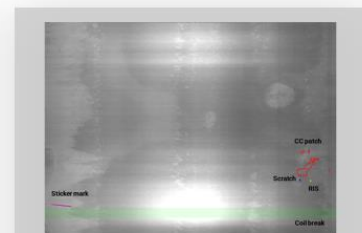
Remotely deployable Android and Linux based handheld Edge Vision System for automating manual visual inspection, in-use monitoring, remote inspection, and reporting. Remove need for manual skill and bias in visual inspection processes.



Holes, scratches, cracks, finish, wear, joint, and GD&T using **DCT-based signal processing**

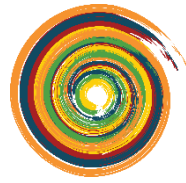


AI-based holes, scratches, cracks, finish, and wear detection using **Transformers**



AI-based custom defect detection using **U-nets**

Quick, predictable onboarding with high precision and recall metrics even in low defect ppm lines



Fovea Edge Computer Vision Applications



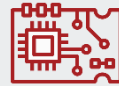
Automotive

Component surface inspection,
Paint finish inspection,
Quality and metrology lab



Healthcare and Pharma

Chemical, Vial, Pills inspection, in-
use equipment testing, installation
and commissioning



Electronics & Electrical

IC moulding & IC lead cosmetic
defect inspection, Micro cracks of
WLCSP, Edge chipping and burrs
after dicing, Probe marks



Food & Beverages

Label, fill level, counting, cosmetic
defects inspection, traceability,
packaging inspection



Data-fusion of multi- sensor inputs

Enable multi-sensor data
processing for inspection,
maintenance, and operation.



Operator input detection

Improve UI/UX with gesture
identification and audio commands.



AR / VR applications

Heads-up display for operator
interactions and information.



Mobile control

Interact with and carry your entire
digital control ecosystem.

Fovea Edge Computer Vision Libraries



Galvanized Steel



Non-Galvanized steel



**Fluorescent & Magnetic
penetrant inspection**



Glass



Labels and Stickers



Textile

CONTACT

Myelin Foundry Pvt. Ltd.
Ph. +91 (080) 6190-4242
Email. social@myelinfoundry.com

www.myelinfoundry.com

